

#STRUKA



SVS X ASS

# DRinVET

How to ...

*Best Practice in Blended Teaching/Learning*



Co-funded by the  
Erasmus+ Programme  
of the European Union

The European Commission's support for the production of this publication does not constitute an endorsement of the contents, which reflect the views only of the authors, and the Commission cannot be held responsible for any use which may be made of the information contained therein.

**Project No. 2020-1-HR01-KA226-VET-094650**



# Summary

---

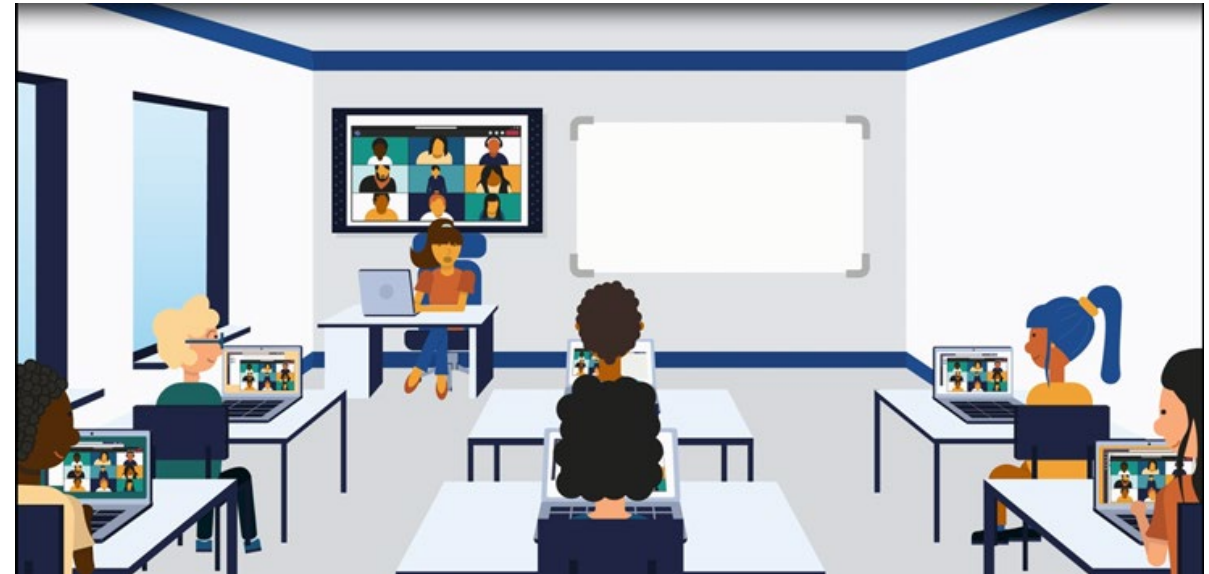
- 01 Blended classroom teaching using Microsoft TEAMS
- 02 Blended classroom learning using Microsoft TEAMS
- 03 Blended classroom self-assessment using Microsoft TEAMS





# Blended classroom teaching using Microsoft TEAMS

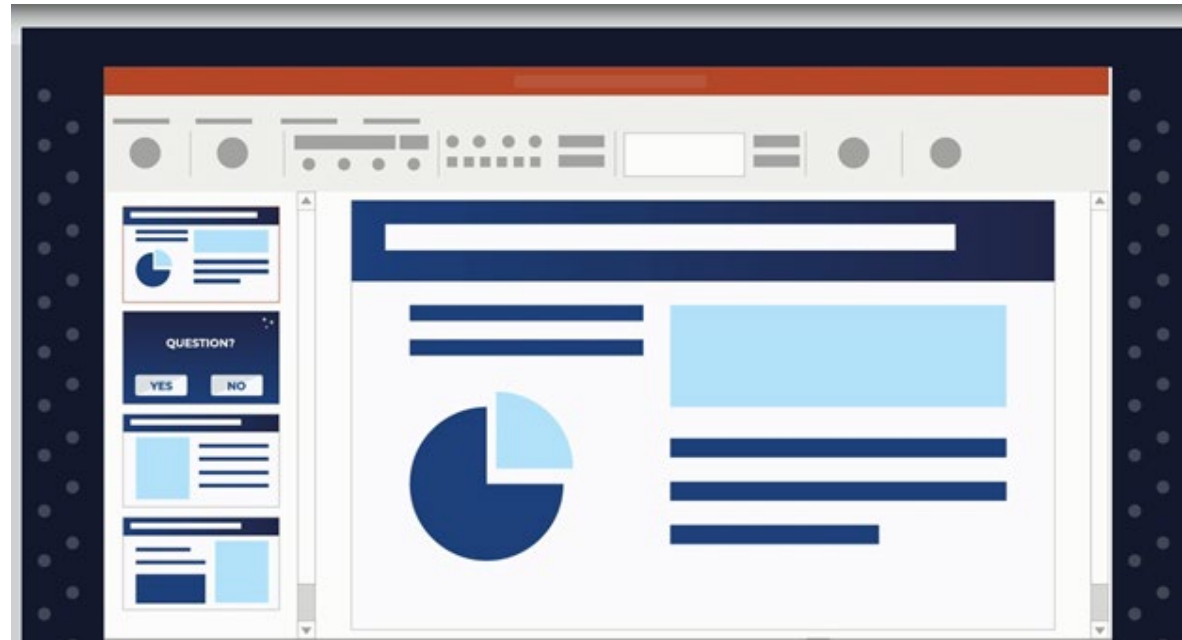
To use Microsoft Teams, a software that primarily allows messaging, calling, video meetings and file sharing, both students/trainees and teachers/trainers need to be connected to the class/training via Microsoft Teams. At least 50% of the class needs to be present in the classroom, while the other 50% needs to be connect online.





# Blended classroom teaching using Microsoft TEAMS

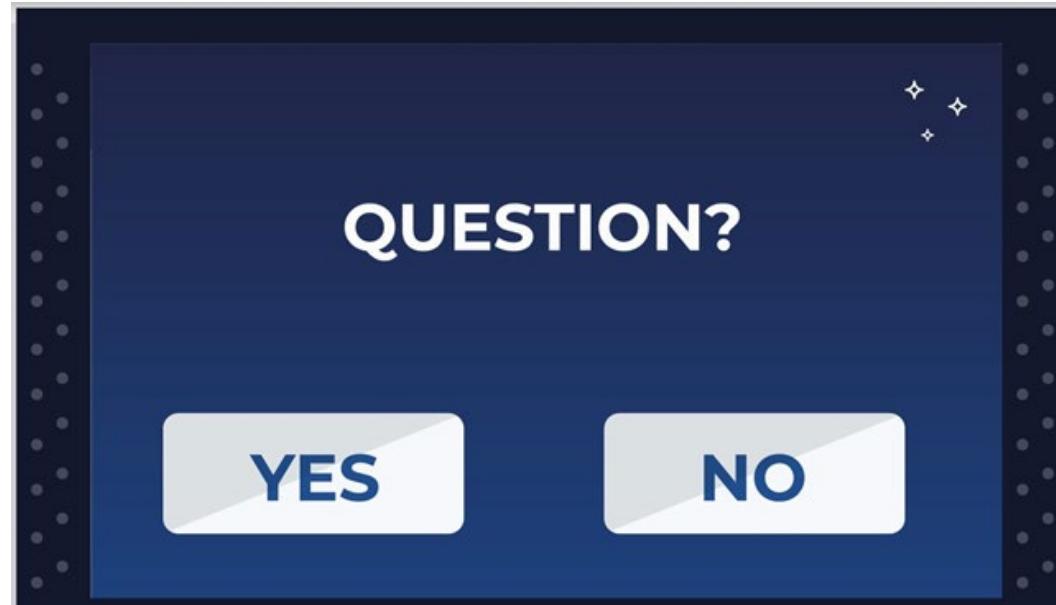
A PowerPoint lecture is required to be prepared prior to the class/training, so it can be presented by the teacher/trainer to the students/trainees.





# Blended classroom learning using Microsoft TEAMS

The lecture must include at least one Yes or No question, for each portion of the given subject, in order to engage the students/trainees in consolidating the knowledge they are acquiring and make them aware of it.





# Blended classroom self-assessment using Microsoft TEAMS

After the presentation, the students/trainees must be divided in small groups (3 to 4), for an interactive activity regarding the entirety of the given subject, to self-assess the knowledge acquired and identify which areas need more study.



*Any Questions?*



*Thank you.*



Co-funded by the  
Erasmus+ Programme  
of the European Union

The European Commission's support for the production of this publication does not constitute an endorsement of the contents, which reflect the views only of the authors, and the Commission cannot be held responsible for any use which may be made of the information contained therein.  
ERASMUS + KA2: 2020-1-HR01-KA226-VET-094650

